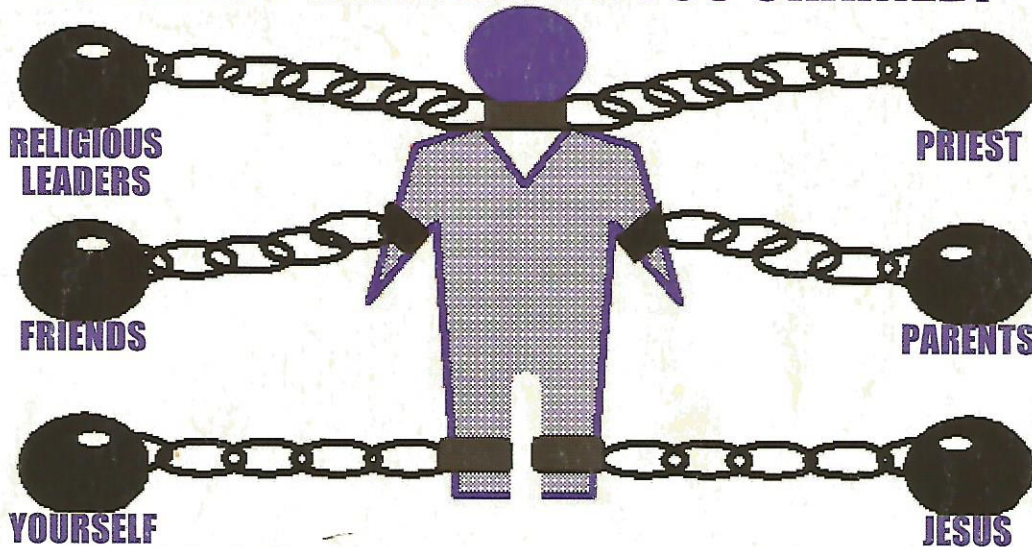


## TO WHICH MASTER ARE YOU CHAINED?



## WHO IS YOUR LORD?

MT. 7:21: NOT \_\_\_\_\_ UNTO ME, LORD, LORD, BUT HE THAT \_\_\_\_\_.

ROM. 6:16: YOU ARE \_\_\_\_\_ TO THE ONE WHOM YOU \_\_\_\_\_.

MT. 23:8-10: CALL NO MAN YOUR \_\_\_\_\_, OR \_\_\_\_\_.

GAL. 1:10: IF I AM TRYING TO PLEASE MEN, NOT A \_\_\_\_\_ OF CHRIST.

MT. 10:37: LOVES FATHER OR MOTHER MORE THAN ME, \_\_\_\_\_.

JN. 6:38: NOT TO DO \_\_\_\_\_ WILL, BUT THE WILL OF HIM THAT SENT ME.

JOSHUA 24:15: AS FOR ME AND MY HOUSE WE WILL \_\_\_\_\_ THE LORD.

### SUMMARY

- (1) NOT ONLY SAYING THAT JESUS IS YOUR LORD BUT OBEYING JESUS AS LORD.
- (2) THOUGH YOU CALL JESUS YOUR LORD, WHOM YOU OBEY IS YOUR REAL LORD.
- (3) A MAN COULD MEANINGFULLY CALL JESUS HIS LORD BUT ACTUALLY BE JESUS' ENEMY.
- (4) EXALTING A MAN RELIGIOUSLY AS A FATHER OR TEACHER ARROGANTLY MAKES HIM YOUR LORD.
- (5) PLEASING MAN SOMETIMES MAKES MAN (NOT JESUS) YOUR LORD.
- (6) A TRUE SLAVE OF JESUS IGNORES THE WORLD'S COMMANDS.
- (7) YOU BECOME YOUR OWN LORD WHEN YOU FULFILL YOUR OWN WILL.
- (8) A TRUE SLAVE OF JESUS JOYFULLY OBEYS THE WORDS OF JESUS.

# BACK TO THE BIBLE